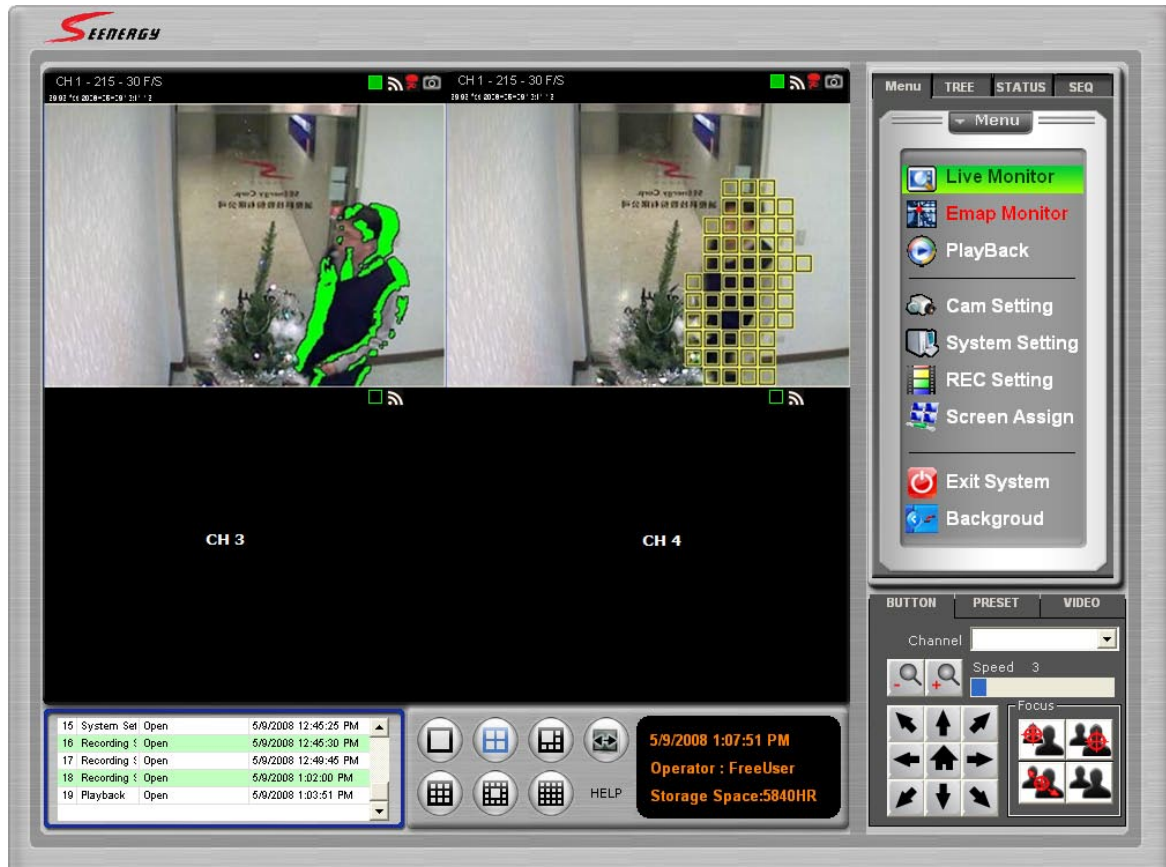


# SEEnergy π-Vu Basic

Dynamic and Feature-Rich Network Surveillance Management Software



π-Vu Basic is the next generation surveillance product of SEEnergy Inc. which is developed with high performance and ease-of-use in mind. The software is designed to support 36 major brand dual-stream network cameras with advanced features such as event management and recording, tri-display monitoring, smart motion detection, advance PTZ control, and E-map. The software is also capable of delivering 16 high quality live view video simultaneously and flexible view pattern selections that can be easily customized to suit your surveillance needs.

*The SEEnergy Smart Motion Detection (SMD) detects motion area to pixel accuracy based on adaptive temporal differencing.*

*A surveillance-specific morphology operation is integrated to filter out noise and enhance motion area simultaneously.*

*SMD has been tested in general indoor/outdoor environment. It is also applicable to low light conditions or infrared images.*

- **Manage up to 36 Network Cameras**
- **Compatible with Major Brand Cameras**
- **High Quality Live/Playback Video**
- **Advanced PTZ Control**
- **SEEnergy Smart Motion Detection**
- **Tri-Monitor Management**
- **E-Map Monitor and Event Alert**
- **Flexible Video Screen Assignment**
- **User Level Access Control**
- **SEEnergy Smart Camera Search**

Preliminary

### π-Vu Basic 1.6 -- Supported Camera List

Manufacturer	Model	Compression Type	PTZ	Audio Supported	I/O Supported
Axis	All dual-stream and H.264 capable cameras	MJPEG/MPEG4/ H.264	v	One-way	v
Panasonic (Communication)	BL-C1/C10/C20/C30 BL-C111/C131 BB-HCS301 BB-HCM311/331/371/381/110 KX-HCM280A BB-HCM403 BB-HCE481 BB-HCM511/531/515/580/581	MJPEG MJPEG/MPEG4 MJPEG MJPEG MJPEG MJPEG MJPEG MJPEG/MPEG4	v	One-way	v
Panasonic (Business)	WV-NP1004/ NS202 WJ-NT304/ NT314 WV-NP244 WV-NF284 WV-NW484 WV-NS202A WV-NS954 WV-NW964 WV-NF302 WV-NP304	MJPEG MJPEG MJPEG/MPEG4 MJPEG/MPEG4 MJPEG/MPEG4 MJPEG/MPEG4 MJPEG/MPEG4 MJPEG/MPEG4 MJPEG/MPEG4 MJPEG/MPEG4	v	One-way	x
Sony	SNC-CS10/CS11/CS20 SNC-DF40/DF70 SNC-DS10/DS60 SNC-P1/P5 SNC-RZ25/RZ50 SNC-CS50/DF50/ DF80 SNC-RX530/RX550/RX570 SNC-RZ30 SNC-Z20N	MJPEG/MPEG4 MJPEG/MPEG4 MJPEG/MPEG4 MJPEG/MPEG4 MJPEG/MPEG4 MJPEG/MPEG4/ H.264 MJPEG MJPEG	v	One-way	x
AVTech	AVI-201 AVI-202 AVI-203	MJPEG/MPEG4 MJPEG/MPEG4 MJPEG/H.264	v	One-way	x

\* Last updated on March 4th, 2009

\* Certain cameras do not support audio function

\* π-Vu Basic v1.6 is required

\* π-vu Basic supports MegaPixel cameras but with Max. Resolution at D1

## π-Vu Basic 1.6 -- Technical Specifications

### Cameras

**Add Camera** Manual/SEEnergy Smart IP Search  
**Max. Channels** 36

### Video

**Compression** MJPEG/MPEG-4 Part 2/H.264  
**Resolution** FD1/CIF/QCIF

### Audio

**Streaming** One-way audio  
**Compression** G.711/G.726 (\*Currently supported Panasonic models only)

### Live View

**Multi-Monitors** Up to three monitors can be automatically detected for viewing different function windows simultaneously  
**Display Mode** Live View/E-Map View/Event View/Playback/Full Screen  
**Split Screen** 1/4/6/9/13/16  
**Full Screen** 16 videos  
**PTZ Support** Virtual PTZ Panel/Video-Click PTZ  
 Auto Pan/Preset Point  
**Sequence Mode** Sequence All/Manually Selected cameras in 1/4/6/9 split view with configurable timer  
**E-Map Monitor** Dual Layer E-Map Display (main map and its sub-maps)  
 Live videos display on map  
**Snapshot** Video snapshot in JPEG format

### Playback

**Split Screen** 1/4  
**Search Method** Time/Date, Event (thumbnails)  
**Playback Controls** Play/Pause/Stop/Forward/Reverse/Speed Adjust/Frame by Frame/Event By Event  
**AVI Export** Export recorded videos to AVI files

### Recording

**Capacity** Depends on hard disk  
**Recording Mode** Manual/Scheduling/Event  
**Scheduling Types** Manual Select/Day Mode/Night Mode/Weekend Mode

### Network

**Protocols** TCP/UDP/HTTP/FTP/SMTP/DHCP/DNS/ARP/ICMP/NTP/UPnP/RTP/RTSP/RTCP

### User Management

**Management** User/Group  
**Number of User** Unlimited  
**Number of Groups** 7 (Administrator/Guest/User Define \* 5)  
**Privileges** Live View/E-Map View/Event View/System Settings/Playback/Camera Settings

### Triggers & Events

**Motion Detection** Easy-to-configure Smart Motion Detection  
**Events** *System Events* -- System Start/Shutdown, System Settings modified, Camera Settings Modified, Start Recycle, Disk Full  
*Camera Events* -- Motion/Sensor Detection  
**Event Actions** On-Screen Alert/Mail/FTP/Configurable Alert Sound/Record  
**Event Recording** Pre/Post Event Settings

### Logs

**Log Types** Alert/Event/User Access  
**Search Method** Time/Date, Event ID, User, Channel ID

### Systems

**Mini. Hardware Requirements** CPU: Intel Pentium 4 or higher @ 2Ghz  
 RAM: Minimum 1GB, 2GB or above is recommended  
 Storage: 200GB or higher  
 Graphic Card: Independant graphic card with DirectX9.0c or higher  
 Network: 100 Megabit Network Interface or above

**Mini. Software Requirements** Windows 2000(SP4), Windows XP, Windows 2003

### General

**Languages** English/Trad. Chinese/Simp. Chinese/Japanese  
**Packaging** CD with Software/Quick Guide/User's Manual

#### Optional Accessory

The optional joystick can give you easier control for the PTZ function

#### AXIS 295 Video Surveillance Joystick

Easy joystick control of Axis PTZ and dome network cameras

**Now Supported!!!**



Preliminary

### SEEnergy Corp.

4F, No.61, Dongsing RD.,  
 Taipei 110, Taiwan, R.O.C.  
 Tel: 886-2-8768-1518  
 Fax: 886-2-8787-8560  
 E-mail: sales@seenergy.com.tw  
 www.seenergy.com.tw

